



Old Park Lane

Southport, PR9 7BS

£1,000 Per Month

Flexi-Agent are delighted to present this newly renovated two bedroom semi detached house to the rental market. Located in a very sought after residential location, it is within close proximity to local amenities and transport links.

The property briefly comprises: Entrance hallway, open plan living/dining area and kitchen with a door leading to the rear garden and separate utility room.

The first floor consists of two well proportioned bedrooms and a modern family bathroom.

Externally the property benefits from driveway parking and a sun catching rear garden with brick built utility room.

Viewings are available on request.

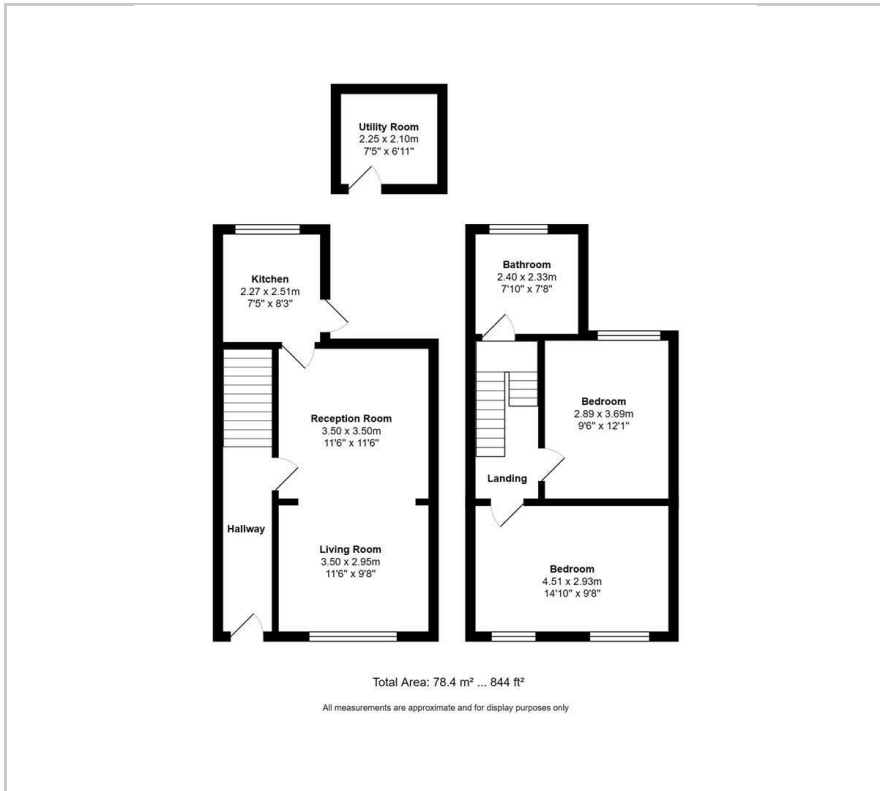
Viewing

Please contact our Flexi-Agent Southport Lettings Office on 01704 889455 if you wish to arrange a viewing appointment for this property or require further information.

- Two bedrooms
- Sought after location
- Two reception rooms
- Utility room
- Family Bathroom
- Sun catching garden
- Driveway parking
- Available immediately
- Viewings available on request



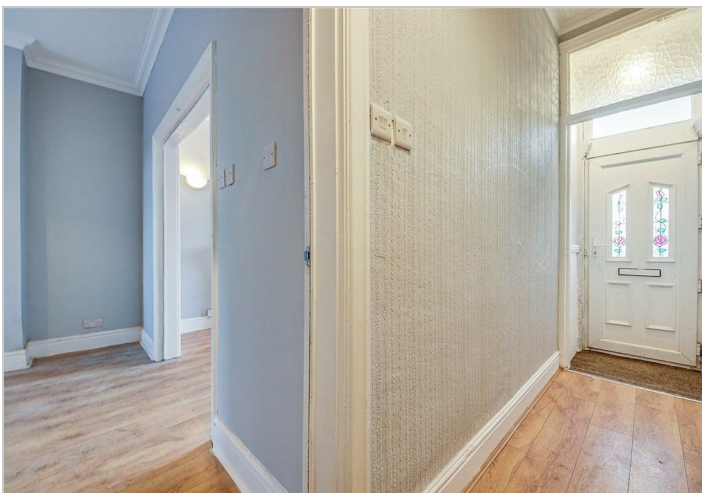
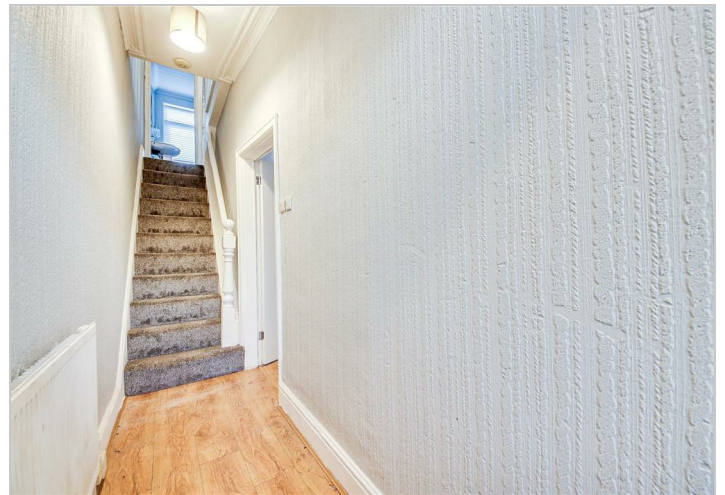
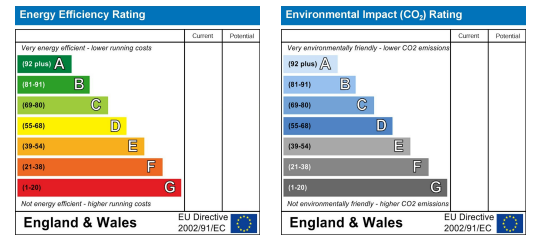
Floor Plan



Area Map



Energy Efficiency Graph



These particulars, whilst believed to be accurate are set out as a general outline only for guidance and do not constitute any part of an offer or contract. Intending purchasers should not rely on them as statements of representation of fact, but must satisfy themselves by inspection or otherwise as to their accuracy. No person in this firm's employment has the authority to make or give any representation or warranty in respect of the property.